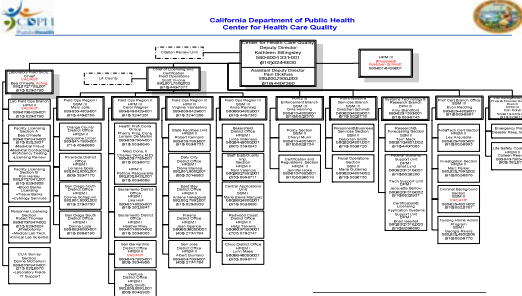




Dan Kotyk, Chief,
CDPH, L&C
Emergency Preparedness and Disaster Response Section,
Life Safety Code Unit

CAHF: Disaster Preparedness Conference – Really Ready Too!
Working with Regulatory Agencies for Better Preparedness
September 29, 2009

CDPH, Licensing and Certification, Emergency Preparedness and Disaster Response Section, & Life Safety Code Unit



Presentation Outline

- Disaster Event Data & Trends
- Actions you can take to Prepare
- Hierarchy of decisions/authority to Re-Populate
- Re-Population Issues
 - How to Prepare
 - How to Leave
 - How to Return
- Questions and Answers

Recent Trends in CA Disasters

Year	# of Minor Events	# of Major Events	# of FEMA Disasters	# of Impacted Facilities	# of Evacuated or Quarantined Facilities	# of Evacuated or Quarantined Patients
2006	Unk	Unk	52	4	2	6
2007	6	4	63	30	26	1298
2008	9	15	75	109	40	755
7/31/09	19	8	45	58	10	1152

Recent Trends in CA Disasters

Year	Total	LTC	Total	LTC	Total	LTC
	# of Impacted Facility	# of Impact LTC Facility	# of Evacuated or Quarantine Facility	# of Evacuate or Quarantine LTC Facility	# of Evacuated or Quarantined Patient	# of Evacuate or Quarantined LTC Patient
2006	4	Unk	2	Unk	6	Unk
2007	30	24	26	21	1298	977
2008	109	79	40	33	755	595
8/30/09	58	32	10	7	1152	316

Actions You Can Take to Prepare

- Develop an Emergency Response Plan that is:
 - All Hazards Inclusive
 - Ties into your Community's Local Emergency Plan
 - Plan to be part of the Community's Emergency Plan
 - Be part of an Alert Network (CAHAN, etc.)

- Be an active participant in Local Emergency Services System

- Activation of the Emergency Plan vs. Asking for a Program Flex

Hierarchy of decisions/authority to Re-Populate

- When it is time to Re-Populate:
 1. LHD OKs a community for Re-Entry.
 2. Local Fire/Law OKs a Neighborhood for Re-Entry.
 3. OSHPD OKs a Building for Re-Entry.
 - Coordinates with CDPH L&C
 4. L&C OKs a healthcare facility to receive patients and conduct a healthcare program.

Re-Population Issues: How to Prepare to Leave

- Have a plan and drill the plan regularly
- Prepare for Evacuation with Re-Population in mind.
- Protect the facility and equipment from the hazard – ash, smoke, water, riot, etc.
- Your ERP should show where you plan to go.
- Make sure your transportation isn't the same as the rest of the facilities in the area.
- Notify Local LHD and L&C of your status

Re-Population Issues: How to Leave

- Prepare for Evacuation with Re-Population in mind.
- Take medication and medical records
- Plan for staffing and continued staffing
- Notify Local LHD and L&C of your status
- Rule of Thumb: Safe, Clean, Functional
- Adverse Events must be reported within 5-days of being detected, provided that the event is not an "ongoing urgent or emergent threat."
- Failure to report these within 24-hours or 5 days results in a civil money penalty of \$100/day.

Re-Population Issues: How to Return

- Don't Re-Populate just to Improve the Location – the facility must be ready to receive patients and conduct treatment.
- Rule of Thumb: Safe, Clean, Functional.
- Notify Local LHD and L&C of your status.
- Document your experience so you can learn from mistakes and best practices.

CDPH, Licensing and Certification

- Dan Kotyk,
 - Chief,
 - Emergency Preparedness & Disaster Response
 - Life Safety Code Unit
- 916-324-0134
- dan.kotyk@cdph.ca.gov

OSHPD Facilities Development Division

- Brian Coppock,
 - Regional Compliance Officer
- 916-284-2739
- bcoppock@oshpd.state.ca.us
